

# Apartment locator

KEY PLANS

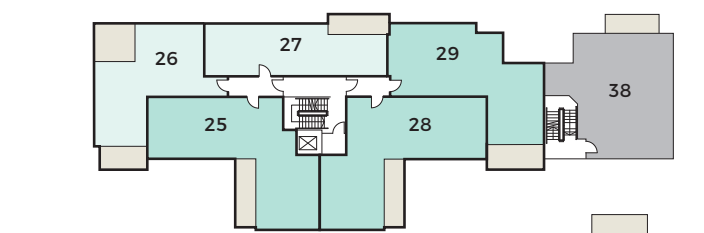
# Development layout

PERFECTLY PLANNED

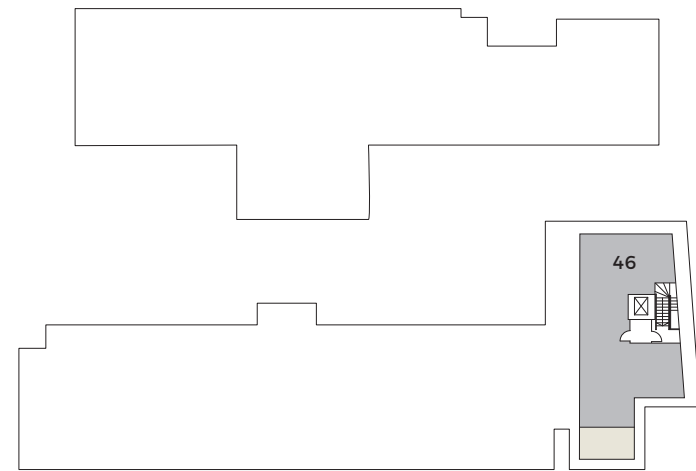
## Numbers 1 & 2 - TWO BEDROOM DUPLEX HOME

Kitchen / Living / Dining	5.34m x 5.10m	17'6" x 16'9"
Bedroom 1	4.02m x 3.44m	13'2" x 11'3"
Bedroom 2	3.88m x 3.43m	12'9" x 11'3"

The apartments and duplex homes at Indigo Square are arranged around a central garden courtyard, overlooked by the majority of homes. Secure underground parking is accessed via a lift from street level, and cycle parking is available.



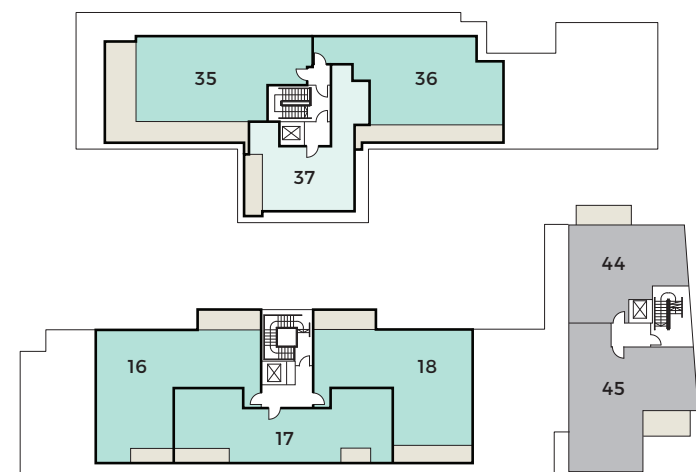
FIRST FLOOR



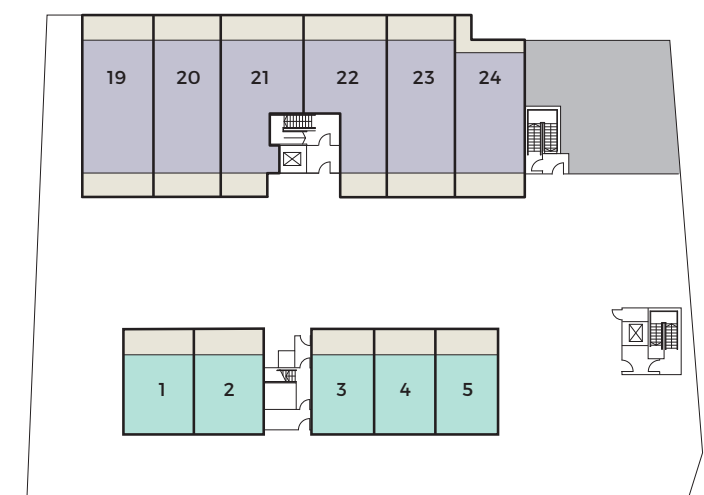
FOURTH FLOOR



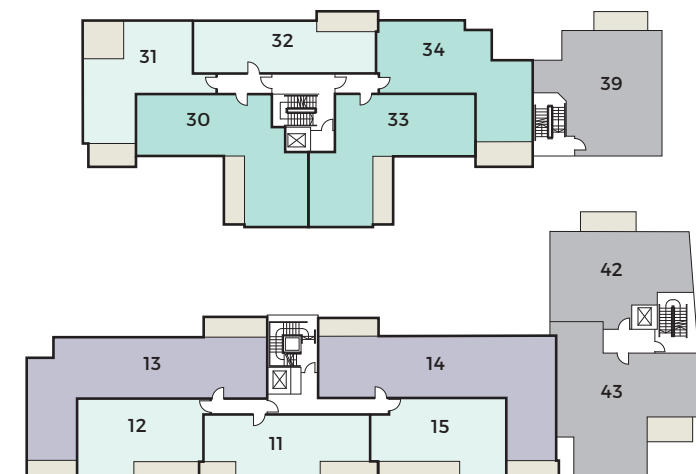
GROUND FLOOR



THIRD FLOOR

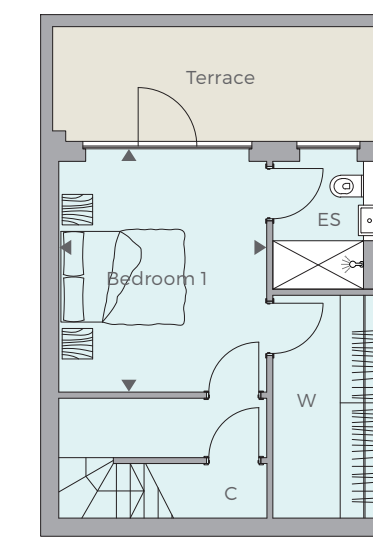
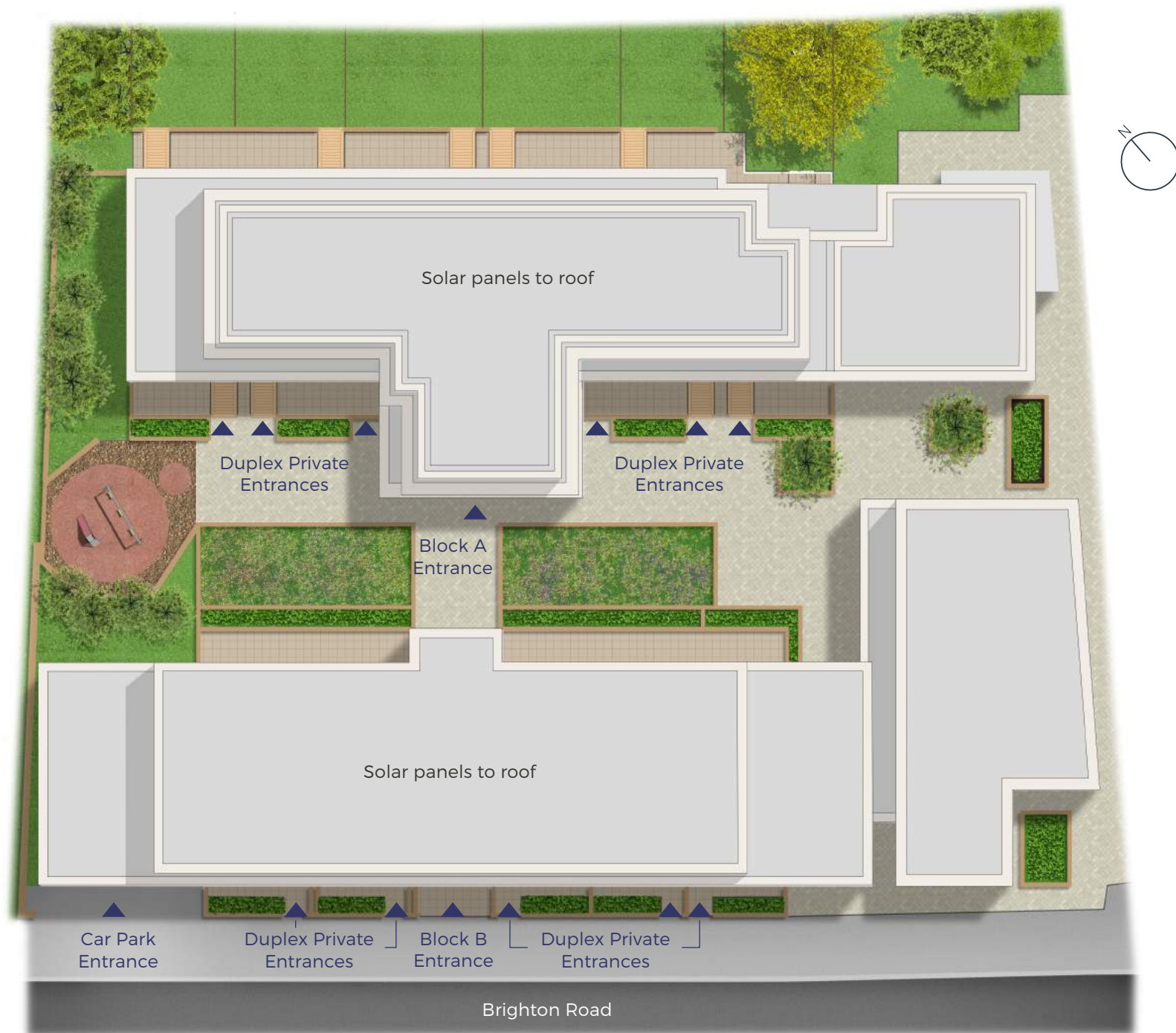


LOWER GROUND FLOOR

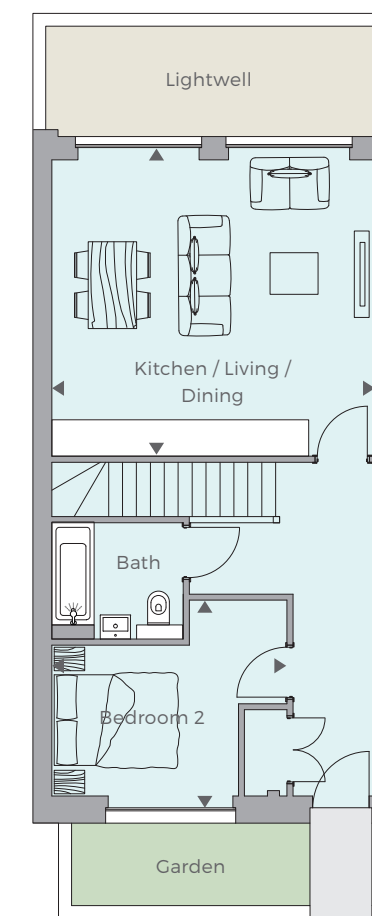


SECOND FLOOR

1 bedroom 2 bedroom 3 bedroom Not for private sale



LOWER GROUND FLOOR

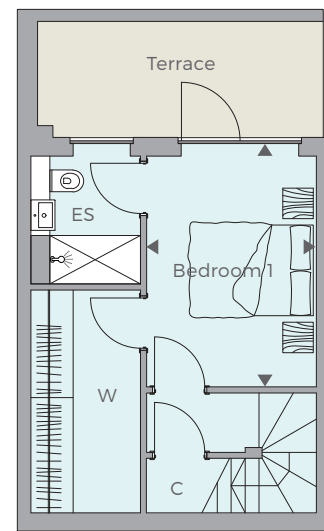


GROUND FLOOR

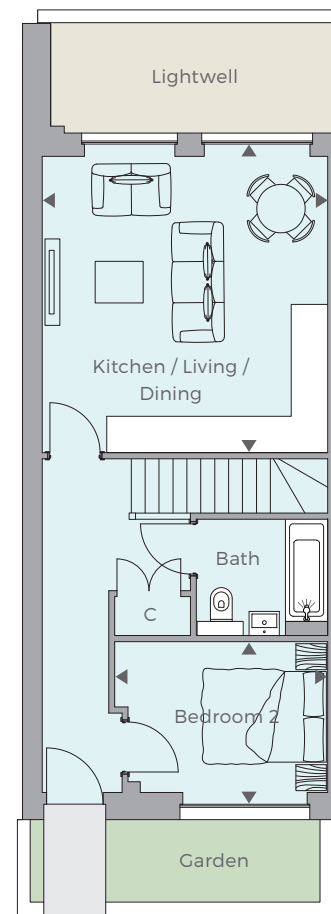
**Numbers 3, 4 & 5 - TWO BEDROOM DUPLEX HOME**

Kitchen / Living / Dining	5.10m x 4.72m	16'9" x 15'6"
Bedroom 1	4.02m x 2.81m	13'2" x 9'5"
Bedroom 2	3.52m x 2.69m	11'7" x 8'10"

Please note: Number 4 is mirrored



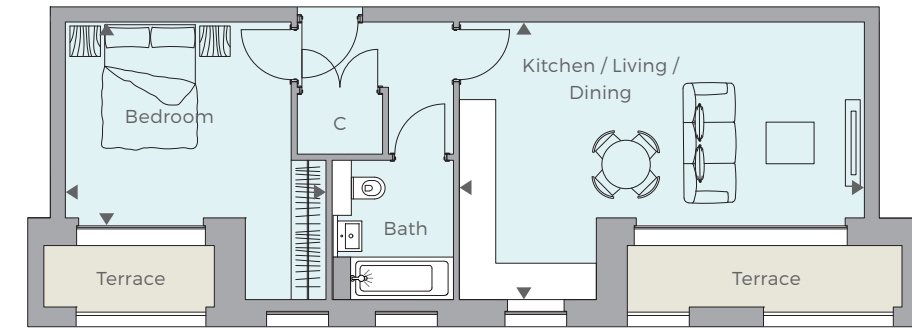
LOWER GROUND FLOOR



GROUND FLOOR

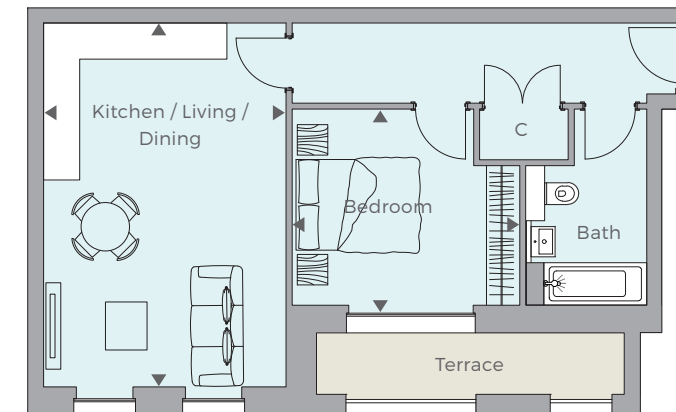
**Numbers 6 & 11 - ONE BEDROOM APARTMENT - First / Second Floor**

Kitchen / Living / Dining	6.69m x 4.59m	20'11" x 15'1"
Bedroom	4.31m x 3.24m	14'2" x 10'7"



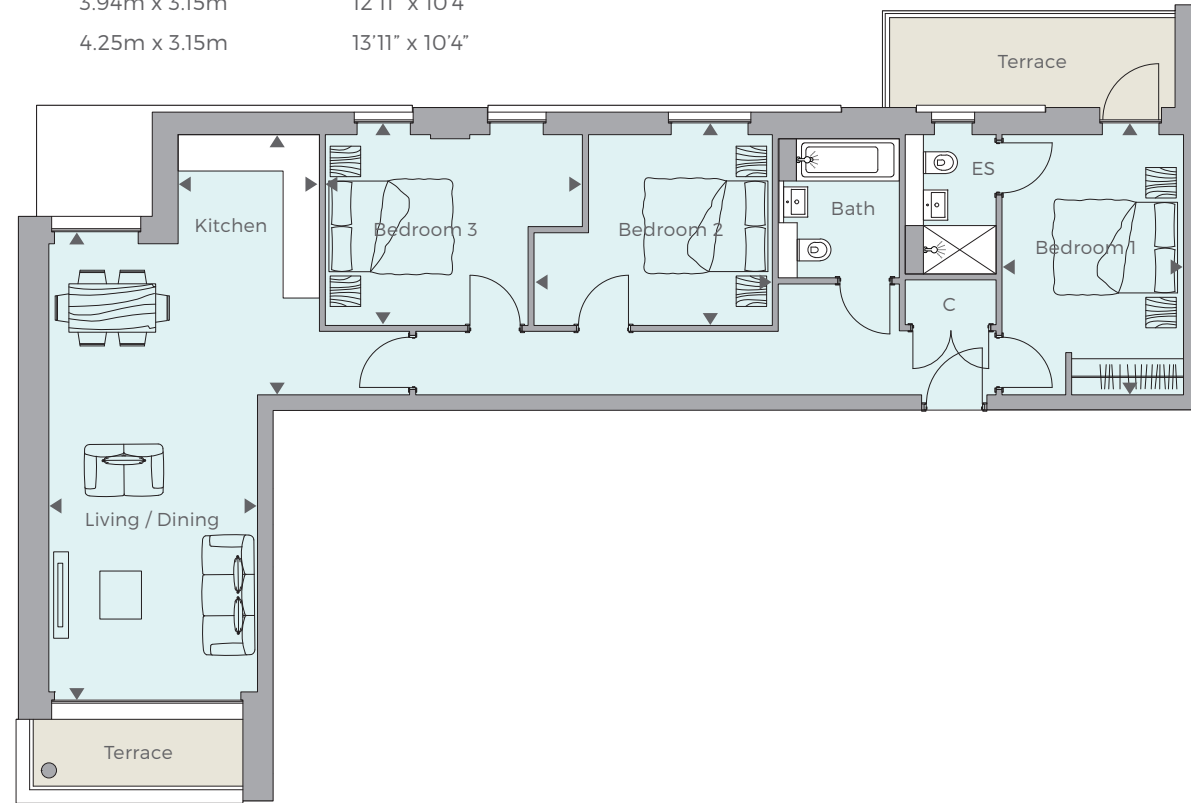
**Numbers 7 & 12 - ONE BEDROOM APARTMENT - First / Second Floor**

Kitchen / Living / Dining	6.01m x 4.01m	19'9" x 13'2"
Bedroom	3.76m x 3.24m	12'4" x 10'7"



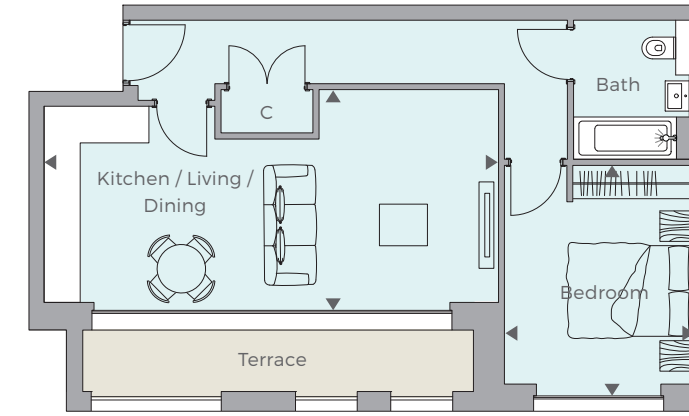
**Numbers 8 & 13 - THREE BEDROOM APARTMENT - First / Second Floor**

Kitchen	4.30m x 2.34m	14'1" x 7'8"
Living / Dining	7.41m x 3.45m	24'4" x 11'4"
Bedroom 1	4.30m x 3.00m	14'1" x 9'10"
Bedroom 2	3.94m x 3.15m	12'11" x 10'4"
Bedroom 3	4.25m x 3.15m	13'11" x 10'4"



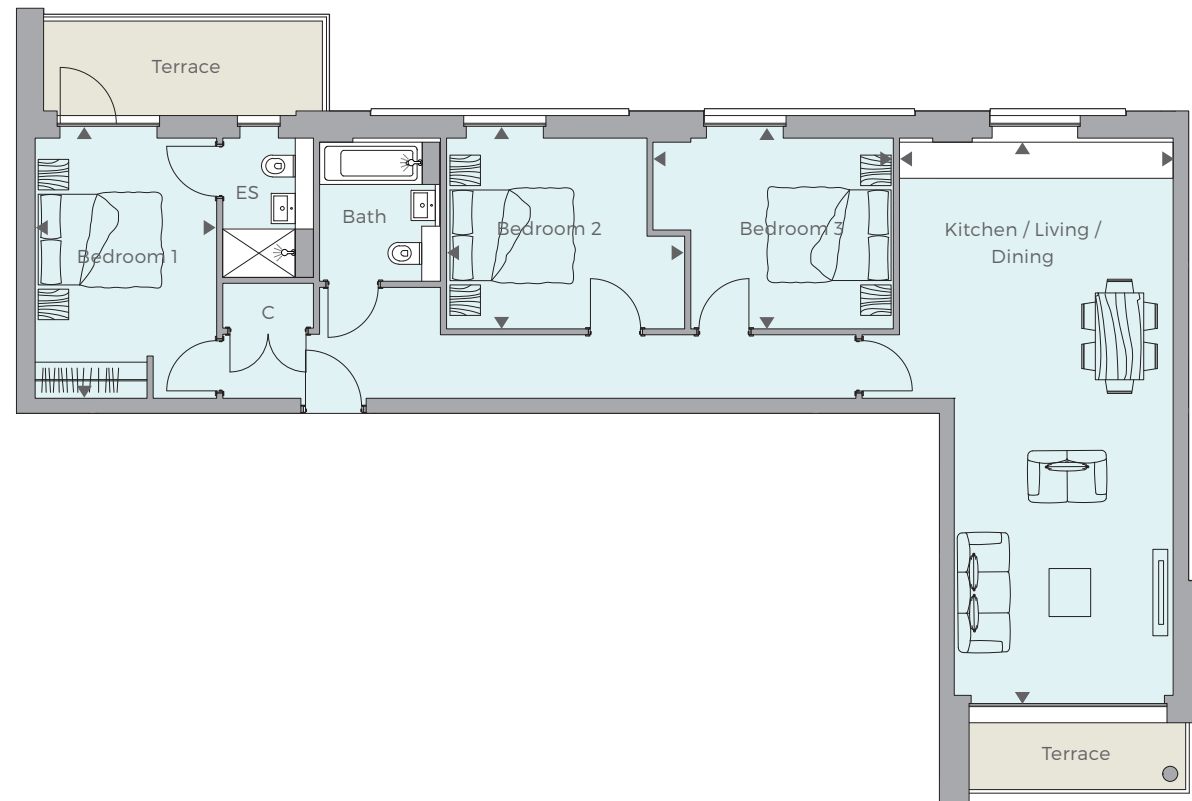
**Numbers 10 & 15 - ONE BEDROOM APARTMENT - First / Second Floor**

Kitchen / Living / Dining	7.51m x 3.51m	24'8" x 11'6"
Bedroom	3.61m x 3.14m	11'10" x 10'4"



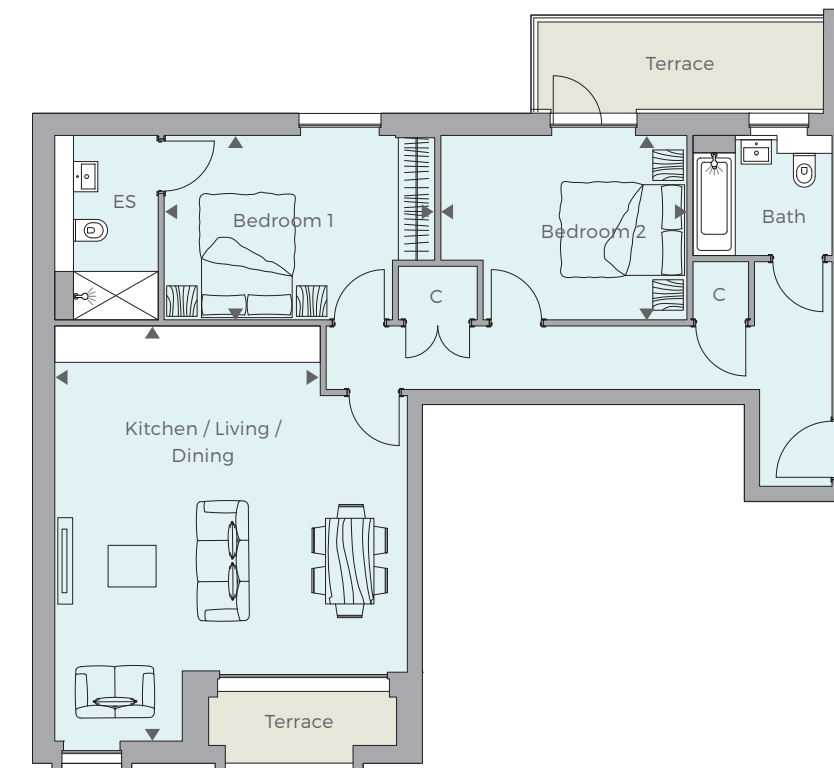
**Numbers 9 & 14 - THREE BEDROOM APARTMENT - First / Second Floor**

Kitchen / Living / Dining	9.21m x 4.52m	30'3" x 14'10"
Bedroom 1	4.30m x 3.00m	14'1" x 9'10"
Bedroom 2	3.94m x 3.15m	12'11" x 10'4"
Bedroom 3	3.97m x 3.15m	10'4" x 13'0"



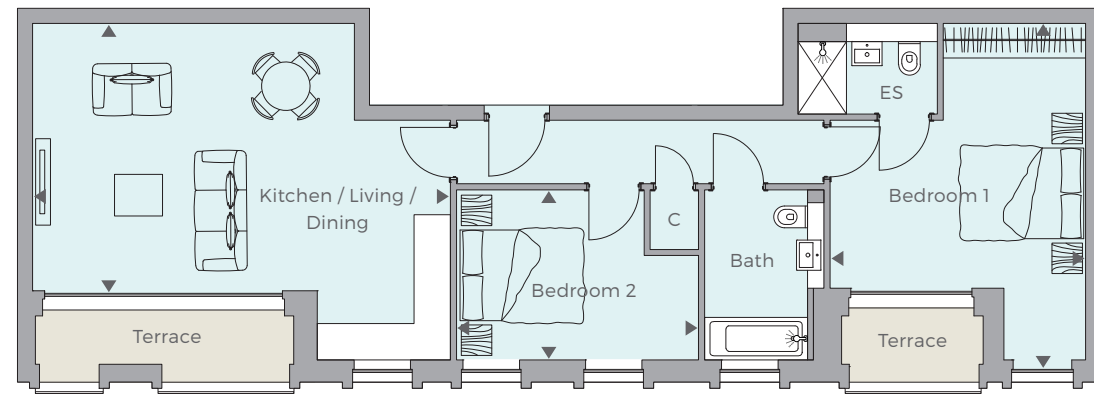
**Number 16 - TWO BEDROOM APARTMENT - Third Floor**

Kitchen / Living / Dining	6.86m x 5.83m	22'6" x 19'1"
Bedroom 1	4.47m x 3.05m	14'8" x 10'0"
Bedroom 2	4.07m x 3.05m	13'4" x 10'0"



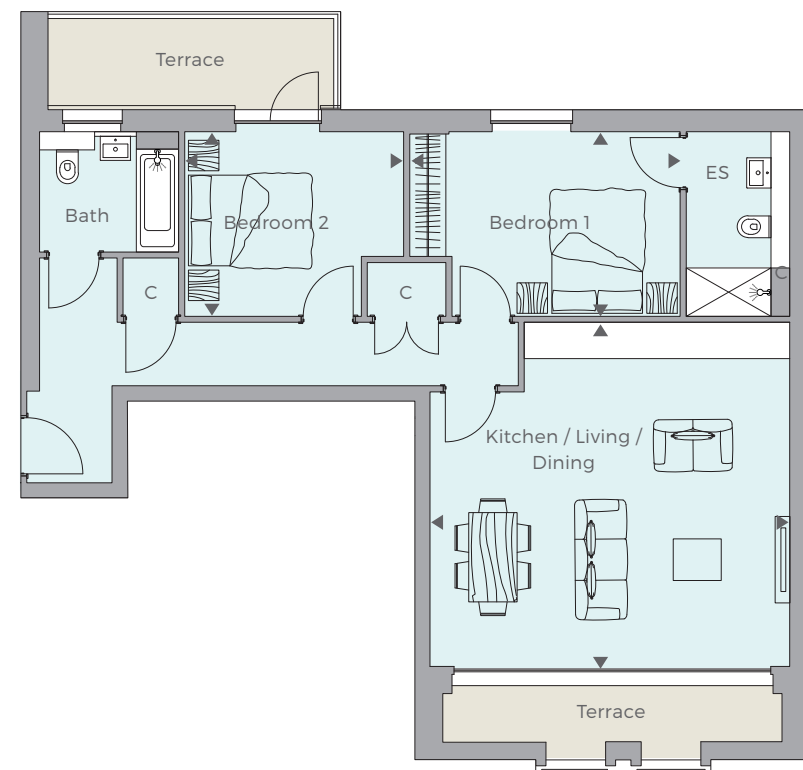
**Number 17 - TWO BEDROOM APARTMENT - Third Floor**

Kitchen / Living / Dining	6.91m x 4.42m	22'8" x 14'6"
Bedroom 1	5.56m x 4.23m	18'3" x 13'10"
Bedroom 2	4.00m x 2.81m	13'2" x 9'3"



**Number 18 - TWO BEDROOM APARTMENT - Third Floor**

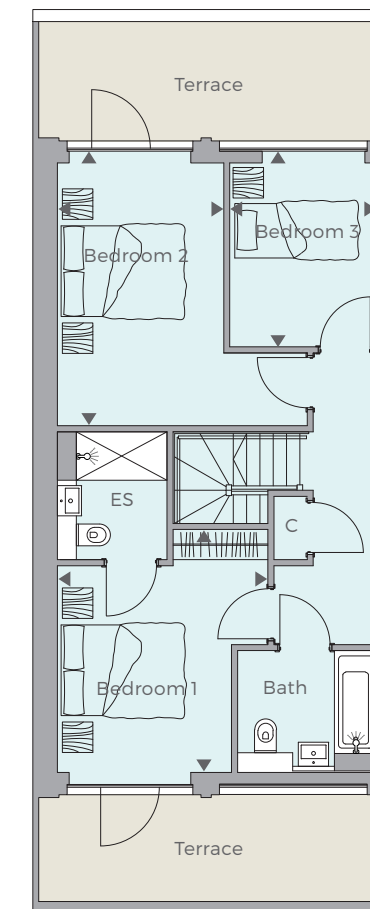
Kitchen / Living / Dining	5.69m x 5.95m	19'6" x 18'8"
Bedroom 1	4.47m x 3.05m	14'8" x 10'0"
Bedroom 2	3.62m x 3.05m	11'10" x 10'0"



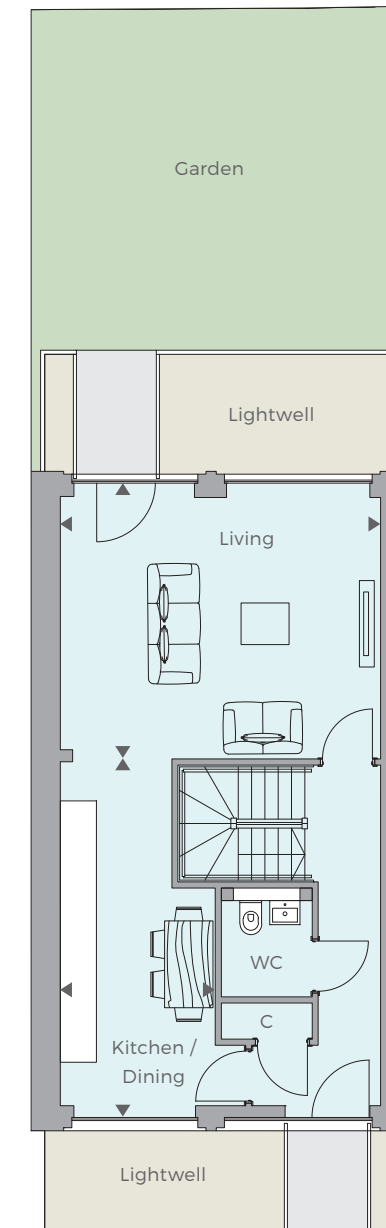
**Numbers 19 & 20 - THREE BEDROOM DUPLEX HOME**

Kitchen / Dining	5.88m x 2.56m	19'4" x 8'5"
Living	5.29m x 4.61m	17'4" x 15'1"
Bedroom 1	4.02m x 3.48m	13'2" x 11'5"
Bedroom 2	4.54m x 2.75m	14'11" x 9'0"
Bedroom 3	3.23m x 2.43m	10'7" x 8'0"

Please note: Number 20 is mirrored



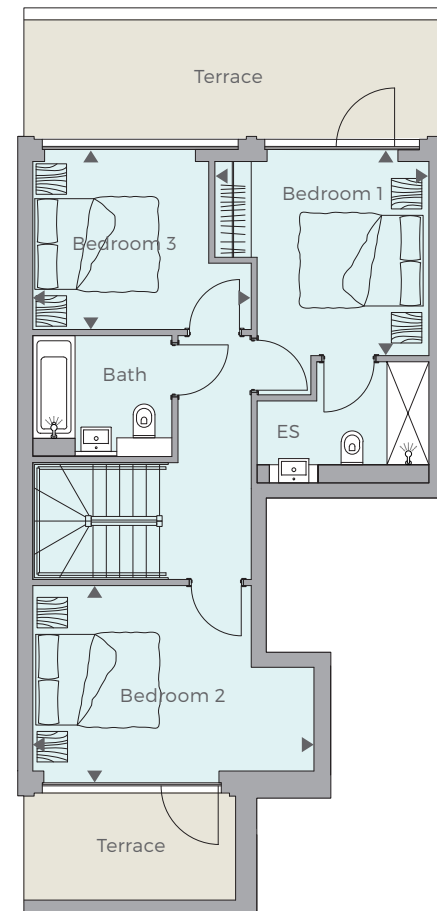
LOWER GROUND FLOOR



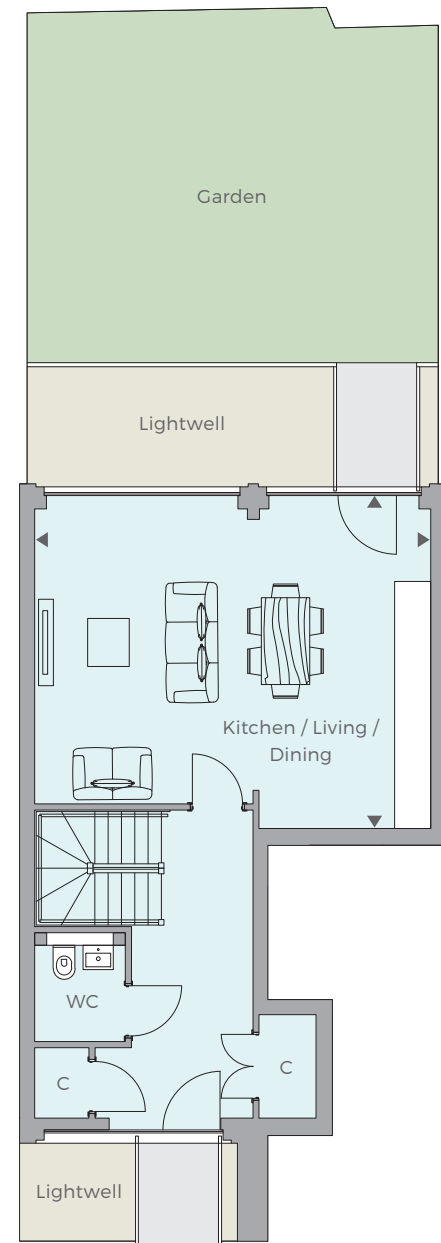
GROUND FLOOR

**Number 21 - THREE BEDROOM DUPLEX HOME**

Kitchen / Living / Dining	6.55m x 5.51m	21'6" x 18'1"
Bedroom 1	3.54m x 3.40m	11'7" x 11'2"
Bedroom 2	4.65m x 3.26m	15'3" x 10'8"
Bedroom 3	3.61m x 2.97m	11'10" x 9'9"



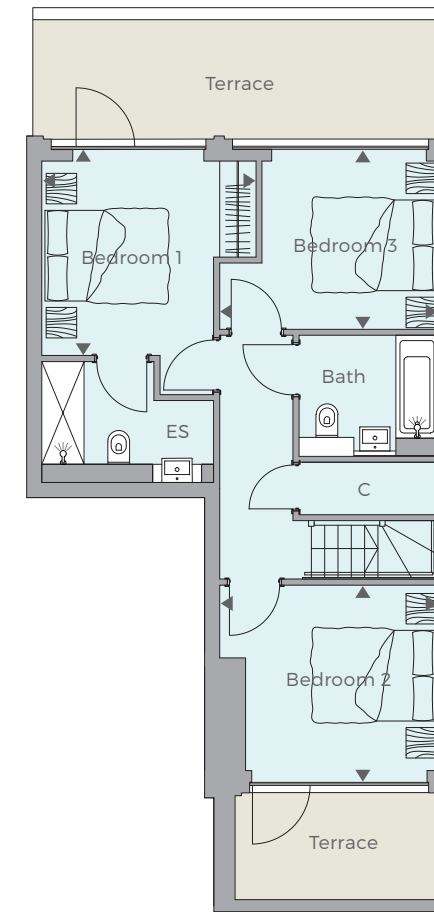
LOWER GROUND FLOOR



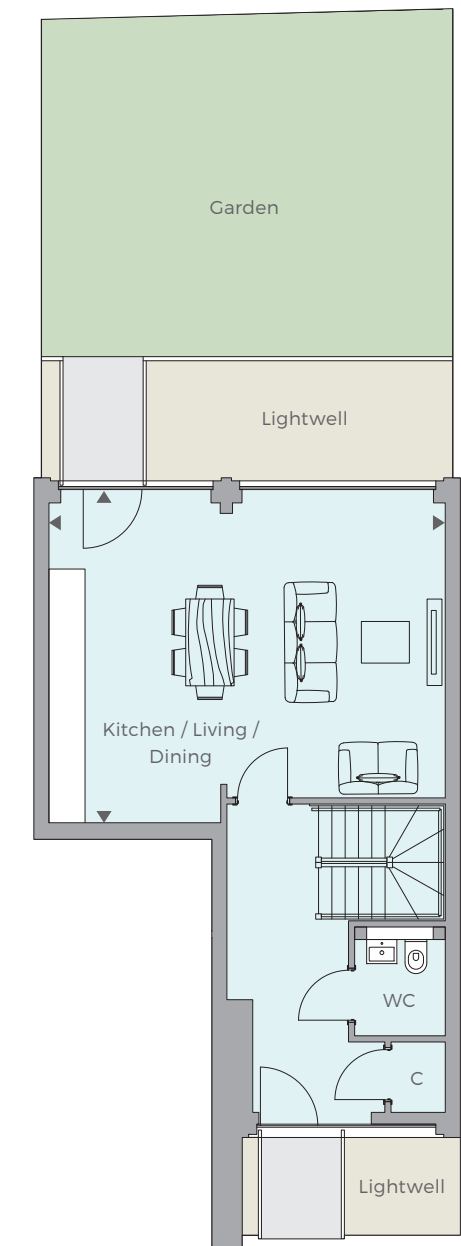
GROUND FLOOR

**Number 22 - THREE BEDROOM DUPLEX HOME**

Kitchen / Living / Dining	6.55m x 5.51m	21'6" x 18'1"
Bedroom 1	3.54m x 3.40m	11'7" x 11'2"
Bedroom 2	3.61m x 3.23m	11'10" x 10'7"
Bedroom 3	3.61m x 2.97m	11'10" x 9'9"



LOWER GROUND FLOOR



GROUND FLOOR

**Number 23 - THREE BEDROOM DUPLEX HOME**

Kitchen	5.69m x 2.53m	18'8" x 8'4"
Living / Dining	5.28m x 4.61m	17'4" x 15'1"
Bedroom 1	4.02m x 3.48m	13'2" x 11'5"
Bedroom 2	4.54m x 2.75m	14'11" x 9'0"
Bedroom 3	3.23m x 2.43m	10'7" x 8'0"



LOWER GROUND FLOOR

GROUND FLOOR

**Number 24 - THREE BEDROOM DUPLEX HOME**

Kitchen / Dining	5.69m x 2.69m	18'8" x 8'10"
Living	5.44m x 3.82m	17'10" x 12'6"
Bedroom 1	4.02m x 3.64m	13'2" x 11'11"
Bedroom 2	4.29m x 3.75m	14'1" x 12'4"
Bedroom 3	2.59m x 2.45m	8'6" x 8'0"



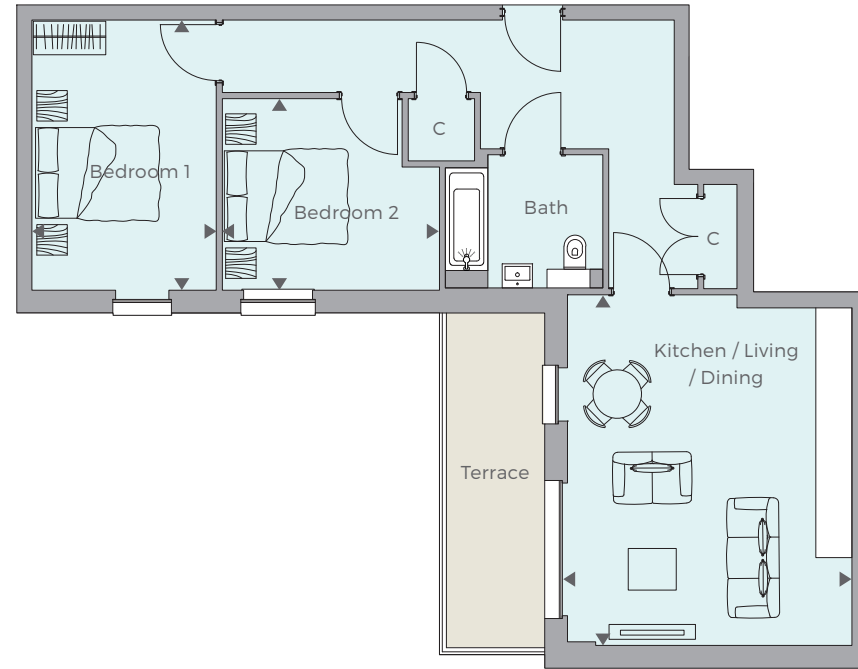
LOWER GROUND FLOOR

GROUND FLOOR



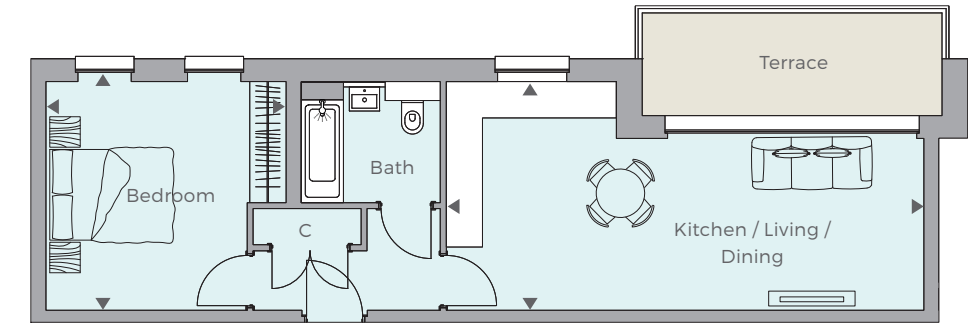
**Numbers 25 & 30 - TWO BEDROOM APARTMENT - First / Second Floor**

Kitchen / Living / Dining	5.58m x 4.70m	18'4" x 15'5"
Bedroom 1	4.47m x 3.05m	14'8" x 10'0"
Bedroom 2	3.59m x 3.17m	11'9" x 10'5"



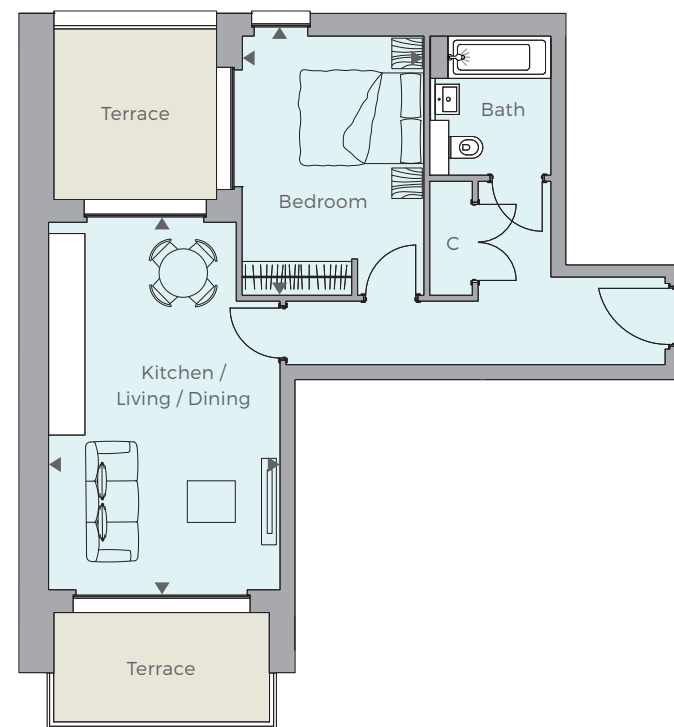
**Numbers 27 & 32 - ONE BEDROOM APARTMENT - First / Second Floor**

Kitchen / Living / Dining	7.90m x 3.78m	25'11" x 12'5"
Bedroom	3.97m x 3.78m	13'0" x 12'5"



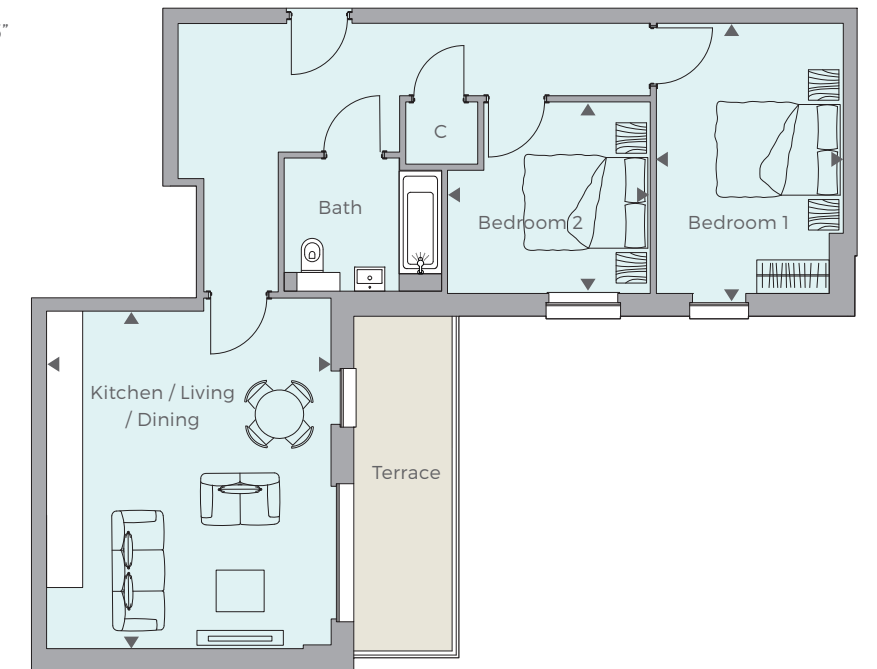
**Numbers 26 & 31 - ONE BEDROOM APARTMENT - First / Second Floor**

Kitchen / Living / Dining	6.07m x 3.82m	19'11" x 12'7"
Bedroom	4.28m x 3.00m	14'1" x 9'10"



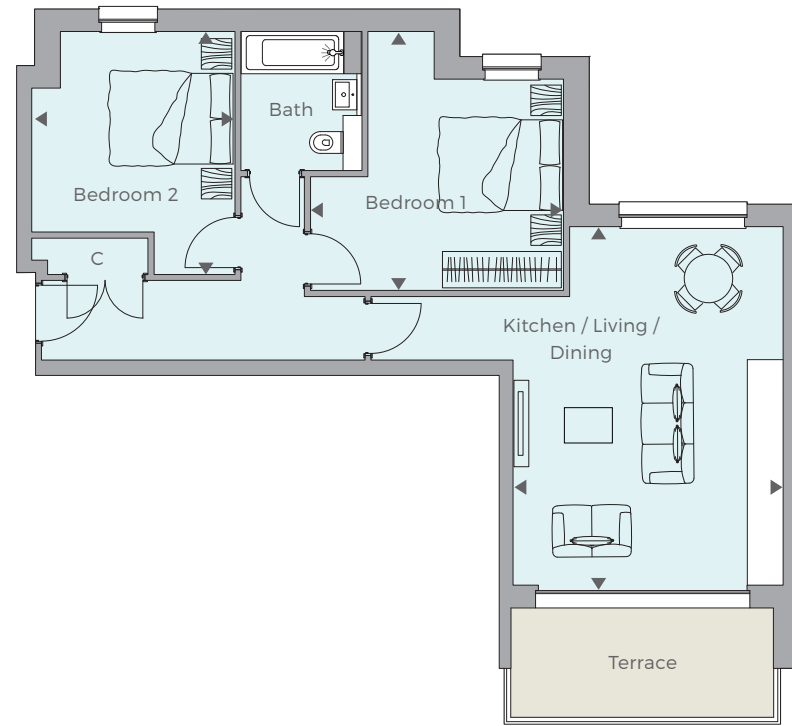
**Numbers 28 & 33 - TWO BEDROOM APARTMENT - First / Second Floor**

Kitchen / Living / Dining	5.58m x 4.70m	18'4" x 15'5"
Bedroom 1	4.47m x 3.09m	14'8" x 10'2"
Bedroom 2	3.35m x 3.17m	11'0" x 10'5"



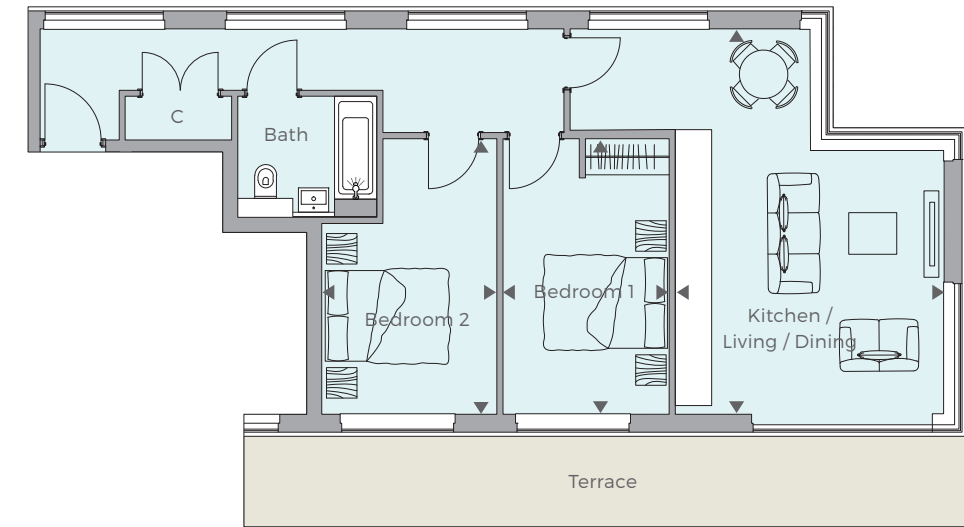
**Numbers 29 & 34 - TWO BEDROOM APARTMENT - First / Second Floor**

Kitchen / Living / Dining	5.92m x 4.47m	19'5" x 14'8"
Bedroom 1	4.28m x 4.18m	14'1" x 13'9"
Bedroom 2	4.02m x 3.36m	13'2" x 11'0"



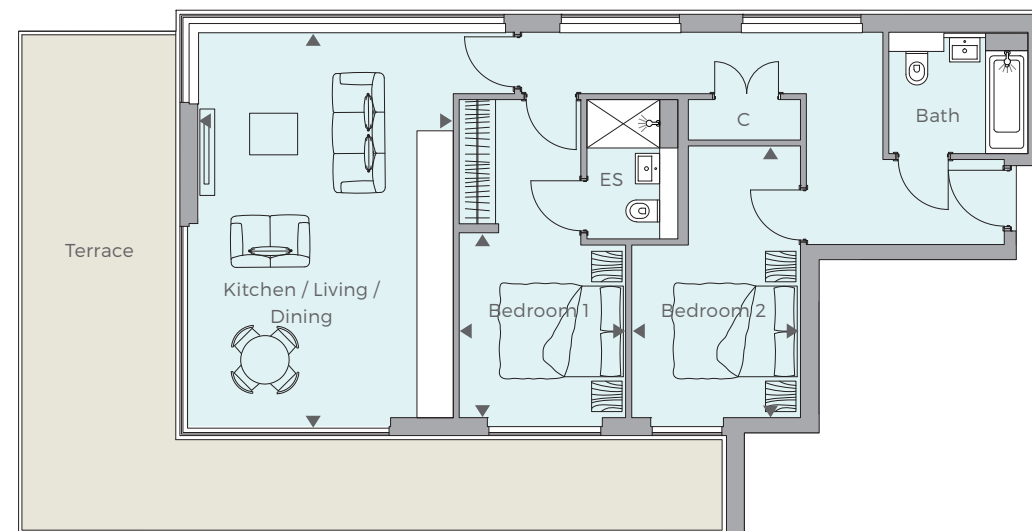
**Number 36 - TWO BEDROOM APARTMENT - Third Floor**

Kitchen / Living / Dining	6.36m x 4.44m	20'10" x 14'7"
Bedroom 1	4.56m x 2.75m	14'11" x 9'0"
Bedroom 2	4.56m x 2.90m	14'11" x 9'6"



**Number 35 - TWO BEDROOM APARTMENT - Third Floor**

Kitchen / Living / Dining	6.36m x 4.21m	20'10" x 13'10"
Bedroom 1	3.06m x 2.75m	10'0" x 9'0"
Bedroom 2	4.49m x 2.79m	14'9" x 9'2"



**Numbers 37 - ONE BEDROOM APARTMENT - Third Floor**

Kitchen / Living	5.00m x 4.88m	16'5" x 16'0"
Dining	2.20m x 2.03m	7'3" x 6'8"
Bedroom	4.45m x 2.89m	14'7" x 9'6"

